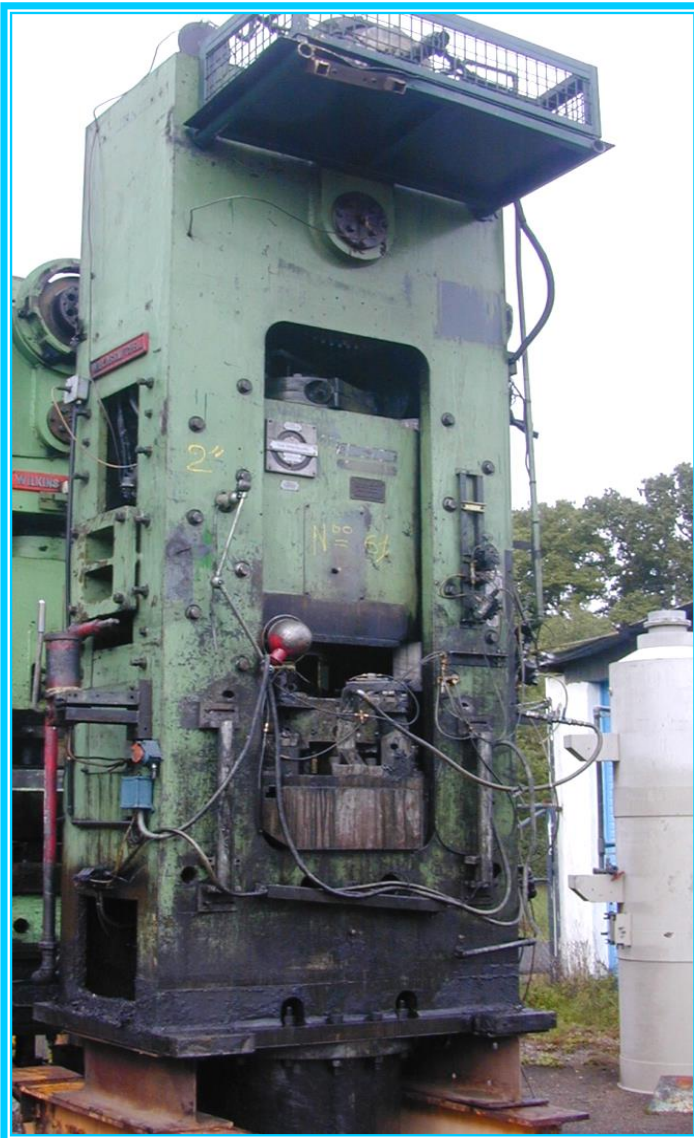


**Straight-sided PRESS WILKINS & MITCHELL
Type D 30 HB 18 - 200 T.**
A0563
TECHNICAL DATA


Capacity	200 T.
Stroke	203 mm
Daylight (LDC, adjustment up)	508 mm
Stroking rate (continuous)	45 Str./min
Motorised adjustment	102 mm
Table area	L/R 762 mm F/B 914 mm
Ram area	L/R 660 mm F/B 610 mm
Table thickness	248 mm
Height of the table over the floor	838 mm
Upper cushion	Capacity: 1280 Kg Stroke: 51 mm
Lower cushion	Capacity: 30,5 T. Stroke: 102 mm
Plate of the cushion	660 x 660 mm
Centralized lubricating	
Motor	1350 Rev/min 20 HP
<u>Dimensions of the press:</u>	
Width:	2600 mm
Depth:	2150 mm
Height:	4500 mm
Weight of the press	19800 Kg