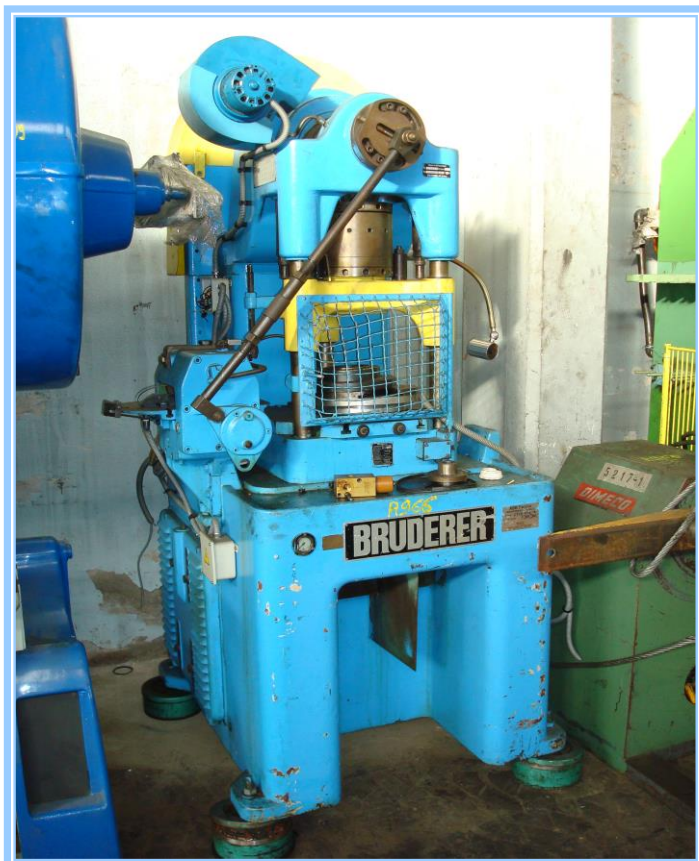


**STRAIGHT-SIDED PRESS
 BRUDERER BSTA30 - 30 T.**
A0966

TECHNICAL DATA

Capacity	30 T.
Serial nb	3420
Adjustable stroke	16 to 40 mm
Stroking rate	100 to 600 str./mn
Table	540 x 450 mm
Ram area	250 mm
Distance between uprights	330 x 300 mm
Dimensions:	
Length	1500 mm
Width	1000 mm
Height	2100 mm
Motor	5,5 kW
Weight	3 T.