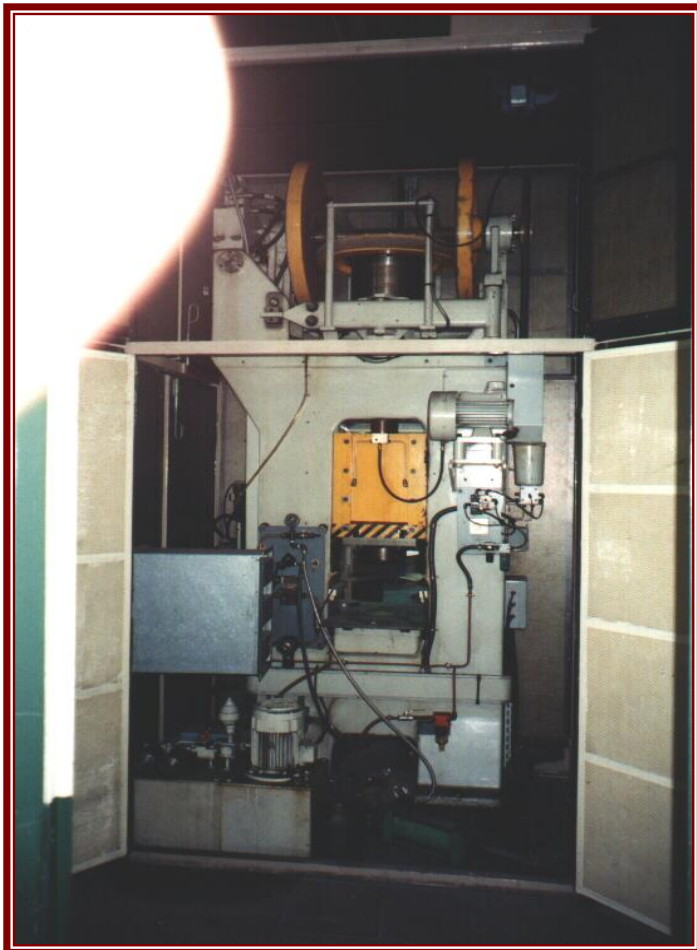


The Specialist in Equipments for
 Forging - Cutting - Drawing

SCREW PRESS HUBERT JUY LEGROS BFA 100

A281

TECHNICAL DATAS



Available work	300 mdaN
Nominal force	1000 kN
Diameter of the screw	100 mm
Maxi stroke	150 mm
Table	L/R 350 mm F/B 400 mm
Base of the ram	L/B 310 mm F/B 350 mm
Motor power	5,5 KW
Maxi opening bet. Table & Ram	370 mm
Height bet. Table & Guides	220 mm
Dimensions:	
	Width: 1550 mm
	depth: 800 mm
	Height: 2900 mm
Approximate weight	3200 Kg

Route de Courpière
 F-63920 Peschadaires - France
 T +33 (0)4 73 80 17 68
 F +33 (0)4 73 80 52 14
 E-mail : ampcf@actemium.com
www.actemium.fr - www.aref.fr

Siège social / Headquarters :
 AREF S.A.S. au capital de 1040 000 Euros
 F-63920 Peschadaires
 Siret 305 824 781 00028
 Code APE 2562 B - FR49 305 824 781

Banque / Bank details :
 SOCIETE GENERALE THIERS
 FR76 3000 3006 5400 0200 1825 990
 SOGEFRPP